

Before the
UNITED STATES SENATE COMMITTEE ON FINANCE
Washington, DC 20510-6200

In the Matter of

United States Senate Committee on Finance Bipartisan Mental Health Request
for Information
Type text here

COMMENTS OF:

monument

Dan Erstad
VP, Business Development and Partnerships | [Monument](#)
350 7th Ave
Suite 400
New York, NY 10001

Dated: November 12, 2021

Committee on Finance
United States Senate
219 Dirksen Senate Office Building
Washington, D.C. 20510

Submitted electronically via mentalhealthcare@finance.senate.gov

Re: United States Senate Committee on Finance Bipartisan Mental Health Request for Information

Thank you for the opportunity to comment on the United States Senate Committee on Finance Bipartisan Mental Health Request for Information (RFI). Given the widespread mental health challenges faced by our country and its most vulnerable communities, we're grateful to see the United States Senate Committee on Finance crowdsourcing innovative ideas that will directly translate into equitable policy solutions. The following comment will focus on how Monument, an innovative telemedicine platform for the treatment of alcohol use disorder (AUD), can expand access to evidence-based virtual care for those navigating unhealthy alcohol use. Given the connection between substance use and mental health challenges, accessible treatment is more crucial than ever before.

At Monument, we empower our members to meaningfully reduce their alcohol consumption or achieve abstinence through evidence-based virtual care. Treatment is led by therapists and physicians, and supported by a powerful digital community. We believe treatment should be affordable, accessible, and research-based, so everyone can achieve their goals for sobriety or moderation.

Since launching in spring of 2020, Monument has supported over 30,000 individuals on their journey to change their relationship with alcohol. Our response to this RFI is based on anonymized first-party data we have collected from our telehealth platform, as well as industry best practices we have gleaned from engaging with leaders in the substance use disorder treatment ecosystem. We are encouraged to see the Senate committee leaning into policy changes and innovation that reflect the evolving patient experience and the growing willingness to engage in virtual care. Policy changes can play a key role in improving outcomes and creating a more equitable healthcare system.

Background

Unhealthy alcohol use is one of the leading preventable causes of death in the US. Despite the fact that over the last ten years roughly 95,000 deaths per year were directly attributable to alcohol,¹ heavy alcohol use has increased over the last two decades.² Between 2006 and 2014 rates of alcohol-related emergency room visits increased 47 percent.¹ Additionally, the COVID-19 pandemic has further exacerbated unhealthy alcohol use as demonstrated by alcohol sales and survey studies.^{3,4}

While excessive alcohol use climbs, there is more widespread acknowledgement of the chronic medical condition known as alcohol use disorder (AUD). Many people who drink alcohol will develop AUD, defined by the National Institute on Alcohol Abuse and Alcoholism (NIAAA) as “a medical condition characterized by an impaired ability to stop or control alcohol use despite adverse social, occupational, or health consequences”.⁵ According to the 2019 National Survey on Drug Use and Health (NSDUH), researchers estimate as many as 5.3 percent to 13.9 percent of American adults have AUD. However, only 7.2 percent of those with AUD receive treatment in a given year.⁶ There is an urgent need to address AUD and reduce barriers to care by providing accessible, evidence-based treatment.

Simultaneously, as demand for treatment has spiked, there has been a limited supply of trained clinical providers. Wait times for mental healthcare are increasing, causing irreparable harm to patients and creating even more inequity in the system. In a recent [APA study](#), 30% of psychologists reported that they have not been able to meet the demand for treatment from their patients. Moreover, 4 in 10 psychologists reported feelings of burnout. Policy can play a role in allaying the provider crunch.

Evidence-based modalities help patients achieve their goals

For decades, AUD treatment has not been integrated with mainstream healthcare or treated with the same clinical rigor as other health conditions. However, there is strong evidence that pharmacologic and non-pharmacologic interventions reduce excessive alcohol use, which has informed Monument’s holistic treatment approach. Monument’s treatment program includes three core modalities: psychotherapy, medication, and peer support.

1. Psychotherapy

Monument connects patients to therapists specialized in treating substance use disorders.

The Monument therapist network utilizes psychotherapy modalities including Cognitive Behavioral Therapy (CBT), Motivational Interviewing, and Contingency Management. CBT has been demonstrated to have a positive impact on alcohol related outcomes when compare to control conditions.⁷ CBT can help reduce heavy drinking days by helping individuals build coping skills, manage urges to drink and negative thoughts, persevere through setbacks, and address co-occurring anxiety and depression.⁸

2. Medication

Monument connects patients to licensed physicians who can prescribe medication if appropriate. Medications such as naltrexone and acamprosate for AUD are supported by randomized controlled trials: a meta-analysis published in JAMA in 2014 revealed both medications reduce the risk of returning to any drinking as well as return to heavy drinking.⁹ While naltrexone has been demonstrated to reduce the likelihood of relapse irrespective of psychosocial intervention,¹⁰ data suggests it works best in conjunction with CBT as evidenced by a reduced risk of heavy drinking days.¹¹ The combination of pharmacology and psychotherapy is widely acknowledged by substance use disorder experts as the gold standard in the treatment of AUD, and is the clinical basis of Monument's treatment program.

3. Peer Support

Monument facilitates peer-to-peer connection through virtual support groups and an anonymous community forum. Monument's peer support groups differ from Alcoholics Anonymous (AA) and other groups based in Twelve Step Foundation (TSF) because they are moderated by a licensed therapist, inclusive of goals for abstinence and harm reduction, and are open discussions on a variety of topics. However, Monument groups do build upon the evidence from AA/TSF that shows peer encouragement and accountability can reduce heavy drinking.¹² Mutual help organizations like AA and TSF have demonstrated efficacy in sustaining abstinence from alcohol and in decreasing alcohol-related outcomes, such as drinking intensity and drinking consequences.¹³ Participants in AA/TSF have also demonstrated lower healthcare costs after two years of follow up.

In addition to utilizing the leading evidence-based practices, Monument's treatment approach is also informed by the latest research on harm reduction. Research indicates that while the likelihood of avoiding excessive drinking is highest in abstinence-focused individuals, those with non-abstinence-focused objectives were also able to reduce their alcohol use.¹⁴ Experts have therefore called for reduction in heavy drinking to be recognized as a meaningful clinical endpoint in the treatment of AUD given the health benefits of reducing the percent of time a person is drinking heavily and the dose dependent effects of alcohol.¹⁵ That is why Monument's treatment approach is inclusive of abstinence-based goals and non-abstinence based goals. Individuals may be more likely to engage in treatment if they have the option for a non-abstinence endpoint.¹⁶ There are significant benefits to reduction in alcohol use, as demonstrated by studies evaluating non-abstinence levels of reduction and the World Health Organization (WHO) alcohol risk levels framework.

It's also important to note that there is risk for wide variability in implementation of evidence-based practices. Monument's protocols ensure high-fidelity adherence to evidence-based practices and continuous improvement upon them.

Expansion of telehealth for AUD treatment is an opportunity to meet meet patients where they are

Monument is innovating the delivery of evidence-based care through an elegant telehealth platform designed to increase access to treatment and improve patient engagement.

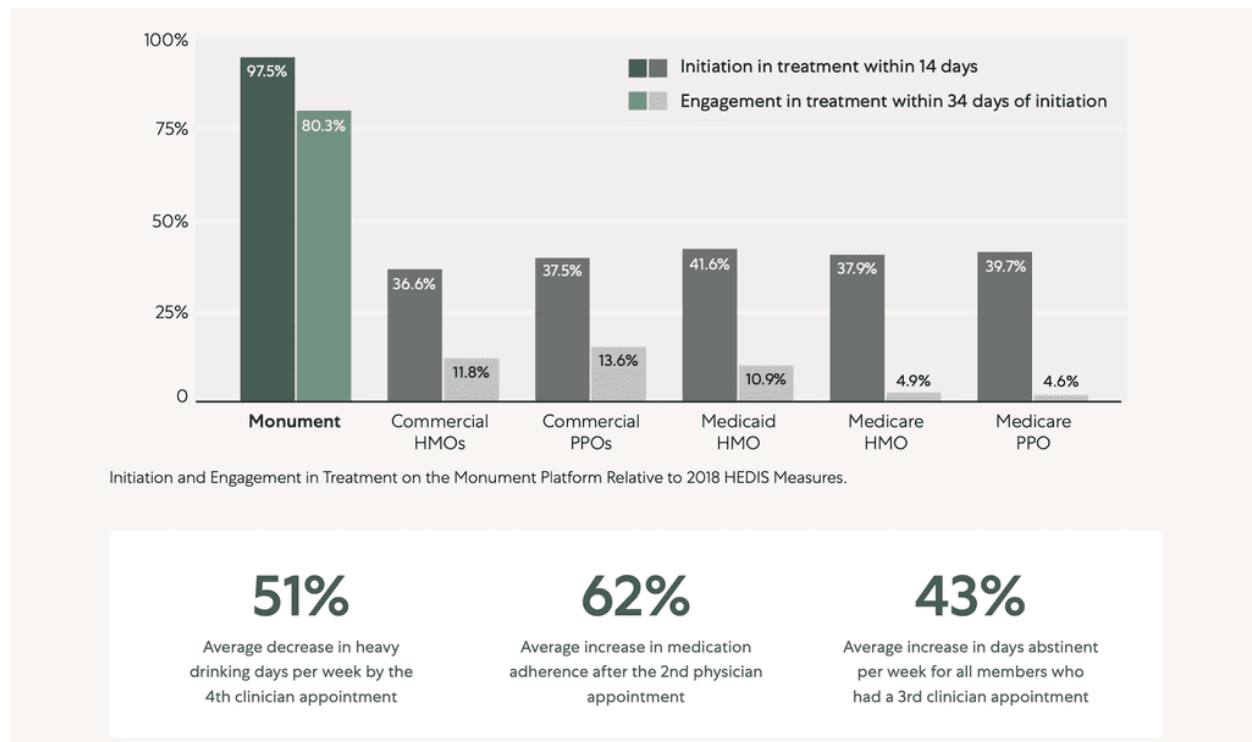
Telemedicine is a rapidly evolving modality for effectively treating AUD, and by the nature of how services are delivered, it reduces barriers to care such as physical proximity, scheduling challenges, confidentiality concerns, and cost. Numerous studies have emerged over the last few years demonstrating that telemedicine has similar efficacy to in-person visits. Internet-based CBT has been demonstrated to be just as effective as face-to-face CBT in reducing alcohol consumption among patients with AUD.¹⁷ A systematic review of studies examining real-time videoconference pharmacologic and non-pharmacologic interventions demonstrated positive findings for safe and effective treatment of AUD. One RCT found that individuals perceived telemedicine as an acceptable alternative to in person intervention.¹⁸

Another study found that among individuals with AUD who participated in telemedicine in addition to standard in-person therapy, only 6 percent of telemedicine participants dropped out compared to 31 percent of in-person individuals at 180 days.¹⁸ Moreover, a systematic review published in 2020 found that telemedicine is effective in reducing alcohol use and is a valuable resource for accessing the healthcare system.¹⁹ Individuals who face stigma associated with in-person interventions may benefit from more anonymous interventions such as online communities to treat AUD. Additionally, telemedicine platforms have become particularly important during the COVID-19 pandemic given disruptions to in-person therapy.²⁰

Telemedicine makes treatment more accessible, and it also enables patients to initiate and engage in treatment alongside their daily schedule. Monument's initial statistical results point to industry-leading rates of initiation and engagement in treatment among its members (Figure 1). 97.5 percent of Monument patients who enrolled in a Monument treatment plan in June 2021 initiated treatment within 14 days. 80.3 percent of Monument patients who initiated treatment with Monument in June 2021 engaged in treatment 2 or more times within 34 days. Qualifying engagements include booking or attending a second appointment, RSVPing to or attending a group session, or receiving a prescription for medication. Industry averages for initiation of treatment range from 41.6 percent in Medicaid HMOs to 36.6 percent in Commercial HMOs. Industry averages for engagement in treatment range from 13.6 percent for Commercial PPOs to 4.6 percent for Medicare PPOs.²²

Initiation and engagement in treatment are crucial to a patient's ability to achieve their alcohol reduction goals. At each therapy appointment, Monument patients are asked to report how many days in the last period they have drank heavily, taken their medications to treat AUD, and been abstinent from alcohol. Preliminary data from Monument patients demonstrates a trend towards fewer heavy drinking days, more days taking medications to treat alcohol use disorder, and more days abstaining from alcohol among patients who participate in a greater number of appointments.

Figure 1



Data is based on a total of 455 patients. Patients were asked about the average percentage of days spent heavily drinking, average number of days remaining abstinent from alcohol, and average number of days taking medications for alcohol use.

Implications & future directions

Monument's evidence-based practices, accessible telehealth platform, and promising preliminary findings point to significant opportunities for improving health outcomes and reducing healthcare costs at scale. For Monument patients who participate in counseling sessions, patients report roughly a 50 percent decrease in heavy alcohol use over the last period.

The FDA Critical Path Investigation meeting in 2018 found that reducing heavy drinking to moderate or low risk drinking resulted in a reduction in healthcare costs per patient from \$4,182 to \$1,994 after one year. Moreover, the annual costs of treating cirrhosis is estimated to be \$44,835 per patient.

The costs are even more staggering at scale. A 2010 analysis revealed that unhealthy alcohol use cost the US nearly \$250 billion.²⁰ These costs include lost workplace productivity and alcohol-related healthcare costs, among others. Given Monument's industry-leading affordability (the Total Care Biweekly plan costs \$149 per month), expanding access to Monument's treatment through strategic partnerships is not only a clinically-effective initiative, but also a cost-saving one.

In addition to expanding access to care through strategic partnerships, Monument is continuing to redefine the alcohol treatment landscape by using rigorous data analysis to improve health outcomes, and building a robust proprietary dataset for the treatment of AUD.

Everyone deserves access to evidence-based care, and with collaboration, innovation, and clinical expertise, the treatment gap will begin to narrow. The over 90 percent of people living with AUD who do not receive treatment each year will have options that meet their needs and preferences, and everyone will have a chance to experience how reducing or abstaining from alcohol consumption can enable an improved quality of life.

Conclusion & policy recommendations

Telemedicine for AUD has tremendous potential to engage more patients who can benefit from evidence-based treatment and support. Policymakers can impact this environment, expanding access and creating more equitable engagement in care.

Specific actions that Congress and CMS can take include:

- Permanently remove the restriction on home as the originating site for telehealth per Social Security Act section 1834m
- Ensure universal and sufficient coverage and payment for video and audio and audio-only telemedicine for AUD treatment in parity with in-person services
- Ensure licenced providers can practice across state lines to improve equitable access to care

We thank the United States Senate Committee on Finance Bipartisan for the opportunity to comment. Monument welcomes the opportunity to discuss these comments in further detail, as appropriate. If you have any questions regarding these comments, please do not hesitate to contact us at 310.999.3474 or at Dan@joinmonument.com.

Respectfully submitted,

Monument

By:



Dan Erstad
VP, Business Development and Partnerships | [Monument](#)
350 7th Ave
Suite 400
New York, NY 10001

References

1. Alcohol Facts and Statistics. National Institute on Alcohol Abuse and Alcoholism. Updated June 2021. www.niaaa.nih.gov/publications/brochures-and-fact-sheets/alcohol-facts-and-statistics. Accessed June 2021.
2. White AM, Castle IP, Hingson RW, Powell PA. Using Death Certificates to Explore Changes in Alcohol-Related Mortality in the United States, 1999 to 2017. *Alcohol Clin Exp Res*. 2020 Jan;44(1):178-187.doi: 10.1111/acer.14239. Epub 2020 Jan 7. PMID: 31912524.
3. Grossman ER, Benjamin-Neelon SE, Sonnenschein S. Alcohol Consumption during the COVID-19 Pandemic: A Cross-Sectional Survey of US Adults. *Int J Environ Res Public Health*. 2020;17(24):9189. Published 2020 Dec 9. doi:10.3390/ijerph17249189
4. Pollard MS, Tucker JS, Green HD. Changes in Adult Alcohol Use and Consequences During the COVID-19 Pandemic in the US. *JAMA Netw Open*. 2020;3(9):e2022942. doi:10.1001/jamanetworkopen.2020.22942
5. Understanding Alcohol Use Disorder. National Institute on Alcohol Abuse and Alcoholism. Updated April 2021. www.niaaa.nih.gov/publications/brochures-and-fact-sheets/understanding-alcohol-use-disorder. Accessed June 2021.
6. SAMHSA, Center for Behavioral Health Statistics and Quality. 2019 National Survey on Drug Use and Health. Table 2.18B – Alcohol Use in Past Year among Persons Aged 12 or Older, by Age Group and Demographic Characteristics: Percentages, 2018 and 2019. www.niaaa.nih.gov/sites/default/files/publications/NIAAA_Alcohol_Facts_and_Stats_5.pdf
7. Magill M, Ray LA. Cognitive-behavioral treatment with adult alcohol and illicit drug users: a meta-analysis of randomized controlled trials. *J Stud Alcohol Drugs*. 2009 Jul;70(4):516-27. doi: 10.15288/jsad.2009.70.516. PMID: 19515291; PMCID: PMC2696292.
8. Riper H, Andersson G, Hunter SB, de Wit J, Berking M, Cuijpers P. Treatment of comorbid alcohol use disorders and depression with cognitive-behavioural therapy and motivational interviewing: a meta-analysis. *Addiction*. 2014;109(3):394-406. doi:10.1111/add.12441
9. Jonas DE, Amick HR, Feltner C, Bobashev G, Thomas K, Wines R, Kim MM, Shanahan E, Gass CE, Rowe CJ, Garbutt JC. Pharmacotherapy for adults with alcohol use disorders in outpatient settings: a systematic review and meta- analysis. *JAMA*. 2014 May 14;311(18):1889- 900. doi: 10.1001/jama.2014.3628. PMID: 24825644.

10. Latt N, Jurd S, Houseman J, Wutzke S. Naltrexone in alcohol dependence: a randomized controlled trial of effectiveness in a standard clinical setting. *MJA*. 2002; 176: 530-534. www.mja.com.au/system/files/issues/176_11_030602/lat10411_fm.pdf
11. Anton RF, O'Malley SS, Ciraulo DA, Cisler RA, Couper D, Donovan DM, Gastfriend DR, Hosking JD, Johnson BA, LoCastro JS, Longabaugh R, Mason BJ, Mattson ME, Miller WR, Pettinati HM, Randall CL, Swift R, Weiss RD, Williams LD, Zweben A; COMBINE Study Research Group. Combined pharmacotherapies and behavioral interventions for alcohol dependence: the COMBINE study: a randomized controlled trial. *JAMA*. 2006 May 3;295(17):2003-17. doi: 10.1001/jama.295.17.2003. PMID: 16670409.
12. Kelly JF. Is Alcoholics Anonymous religious, spiritual, neither? Findings from 25 years of mechanisms of behavior change research. *Addiction*. 2017 Jun;112(6):929-936. doi: 10.1111/add.13590. Epub 2016 Oct 8. PMID: 27718303; PMCID: PMC5385165.
13. Kelly JF, Humphreys K, Ferri M. Alcoholics Anonymous and other 12- step programs for alcohol use disorder. *Cochrane Database Syst Rev*. 2020 Mar 11;3(3):CD012880. doi: 10.1002/14651858.CD012880.pub2. PMID: 32159228; PMCID: PMC7065341.
14. Haug S, Castro RP, Egli P, Schaub MP. Drinking Goal Trajectories and Their Association with Client Characteristics and Outcomes among Clients in Outpatient Alcohol Treatment. *Subst Use Misuse*. 2018 Nov 10;53(13):2140-2151. doi: 10.1080/10826084.2018.1461222. Epub 2018 Apr 13. PMID: 29652560.
15. Gastfriend DR, Garbutt JC, Pettinati HM, Forman RF. Reduction in heavy drinking as a treatment outcome in alcohol dependence. *J Subst Abuse Treat*. 2007 Jul;33(1):71-80. doi: 10.1016/j.jsat.2006.09.008. Epub 2007 Feb 22. PMID: 17588491.
16. European Medicines Agency. Guideline on the Development of Medicinal Products for the Treatment of Alcohol Dependence. European Medicines Agency, London, UK; 2010.
17. Johansson M, Sinadinovic K, Gajecki M, Lindner P, Berman AH, Hermansson U, Andréasson S. Internet-based therapy versus face-to-face therapy for alcohol use disorder, a randomized controlled non-inferiority trial. *Addiction*. 2021 May;116(5):1088-1100. doi: 10.1111/add.15270. Epub 2020 Oct 13. PMID: 32969541.
18. Lin LA, Casteel D, Shigekawa E, Weyrich MS, Roby DH, McMenemy SB. Telemedicine-delivered treatment interventions for substance use disorders: A systematic review. *J Subst Abuse Treat*. 2019 Jun;101:38-49. doi: 10.1016/j.jsat.2019.03.007. Epub 2019 Mar 21. PMID: 31006553.

19. Kruse CS, Lee K, Watson JB, Lobo LG, Stoppelmoor AG, Oyibo SE. Measures of Effectiveness, Efficiency, and Quality of Telemedicine in the Management of Alcohol Abuse, Addiction, and Rehabilitation: Systematic Review. *J Med Internet Res*. 2020 Jan 31;22(1):e13252. doi: 10.2196/13252. PMID: 32012048; PMCID: PMC7055825.
20. Bergman BG, Kelly JF, Fava M, Eden Evins A. Online recovery support meetings can help mitigate the public health consequences of COVID-19 for individuals with substance use disorder. *Addict Behav*. 2021 Feb;113:106661. doi: 10.1016/j.addbeh.2020.106661. Epub 2020 Sep 16. PMID: 33038682; PMCID: PMC7493730.
21. Sacks JJ, Gonzales KR, Bouchery EE, Tomedi LE, Brewer RD. 2010 National and State Costs of Excessive Alcohol Consumption. *Am J Prev Med*. 2015 Nov;49(5):e73-e79. doi: 10.1016/j.amepre.2015.05.031. Epub 2015 Oct 1. PMID: 26477807.
22. Sacks JJ, Gonzales KR, Bouchery EE, Tomedi LE, Brewer RD. 2010 National and State Costs of Excessive Alcohol Consumption. *Am J Prev Med*. 2015 Nov;49(5):e73-e79. doi: 10.1016/j.amepre.2015.05.031. Epub 2015 Oct 1. PMID: 26477807.